

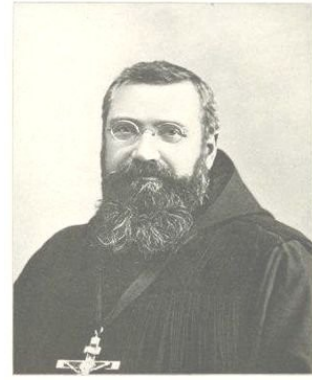
**Another Note on the Mt. Angel – Sublimity Connection,**  
compiled by Henry Strobel, 2011

See the item copied just above on this web page:  
*The Founding of Mt. Angel Abbey: A Letter of 1883*  
Edited by the Rev. Ambrose Zenner, O.S.B.

page 4:

“Sublimity:

This parish is 4 miles from the narrow gauge railroad and 8 miles from the Southern Pacific railroad that goes to California and on which Gervais is situated. Sublimity is 25 miles from Gervais and 18 miles from Fillmore. Father Bede Horat takes care of the parish once a month. He leaves Saturday afternoon. He says Mass on Sunday, preaches once or twice, catechises the children, and returns to Gervais on Monday.



*Adelhelm Odermatt.  
O.S.B.*

“The spirit of the people in Sublimity is not too fervent. Some bad example or scandal was given in this Mission before we came. We shall offer reparation for the wrong done.

“The work of missionary priests in America calls for many types of service besides the spiritual care of the missions. Scandals must be righted, peace must be established, fallen away Catholics must be converted, and all this, in heroic self-denial and self-sacrifice. The physical difficulties are not wanting either, i.e. impassable roads, and inaccessible places.”

See also:

Oregon Historical Society

*The Founding of Mt. Angel Abbey*

Authors(s): Gerard G. Steckler

Reviewed Works(s):

Source: *Oregon Historical Quarterly* Vol. 70, No. 4 Dec., 1969, pp. 312-332

Published by: Oregon Historical Society

<http://www.jstor.org/stable/20613129>

This work is available for a fee only from the above source URL or a participating institution. Of course I cannot reproduce it here, but a copy is available for visitors to read at the St. Boniface Archives & Museum in Sublimity, and I have excerpted here the single relevant paragraph and footnote.

See page 3 below.

§

I am merely suggesting that both these references seem to refer to the same situation in Sublimity, allowing that I have not seen all the original documents. Certainly no mention in Sr. Ursula Hodes' U. of Oregon master's thesis

As I wrote elsewhere, in 1877-1879 the first Catholic services were held in private homes, and later in a leased building. There were only about five Catholic families in Sublimity at the time but they asked Archbishop Blanchet for a missionary priest, and in 1879 Father Peter Juvenal Stampfl arrived.

According to the 1880 US Census he was a Catholic priest born in 1853 in Austria. He wrote the first entry in the parish record on December 3, 1879, which marks the official beginning of Saint Boniface Church in Sublimity, Oregon. See next page.

In 1880 Father Stampfl purchased the empty and run-down Sublimity college buildings (just northeast

of the present church) and 20 acres for the parish in January. One acre was designated the Cemetery of the Angels. The ground floor became the second St. Boniface church. Father Stampfl returned to Minnesota in 1881, a few months before the Benedictines arrived in Gervais and took over the care of the Sublimity congregation, but returned later to visit.

Being a "missionary priest," might have been a lonely or difficult task. People may ask "What ever happened to Fr. Peter Juvenal Stampfl?" but they are grateful for the good he did and the church he started.

We, the undersigned missionary Priest of Oregon, have bought and signed this Registry, containing three hundred and sixty pages in printed figures, for the purpose of recording the, Baptisms, Marriages, christian burials, Confirmations, Dedications of the Church, Blessing of the Church-Bell and Cemetery; the erection of the holy way of the Cross, abjurations, Profession of the roman catholic faith, etc. etc. in the Mission of the catholic Church of St. Boniface, the Apostle of the Germans, at Sublimity, State of Oregon, County of Marion.

The present Register commences on the third day of December of the year: One thousand eight hundred and seventy nine.

Decemb. 3. 1879.

Peter Juvenal Stampfl,  
missionary Priest.

---

Two days after Frei and Odermatt returned from Jacksonville, they were on their way to Fillmore for a look at the potential "New Engelberg." Pausing in Gervais, seven miles northwest of Fillmore, they listened to pastor Francis Hartleib add his praises to the Fillmore hill as an ideal location for a monastery. On Sunday in early October, the two men performed services for the dozen families of the Fillmore community. Odermatt was quickly and favorably impressed with the piety of the Europeans, the plateaued elevation, and the surrounding countryside. The pair went on to conduct services in the town of Sublimity, 15 miles south of Fillmore and serving some 40 to 50 German families. Sublimity sorely needed a pastor. Their latest, Peter Stampfl, had just written largely in a sorry ledger of Pacific Northwest ecclesiastical history. Stampfl had grown much too fond of his liquor, caused scandal, and had fled his mission some months previously.<sup>13</sup>

---

13. Sister Ursula Hodes, O.S.B., "Mt. Angel, Oregon, 1848-1912" (unpub. Master's thesis, Univ. of Oregon, 1932), 55-56; CS, Aug. 25 and Oct. 6, 1881; Odermatt zu Villiger, 8 March 1883, BMA; Seghers to Mathias Butsch, Portland, Sept. 30, 1881, copy in Convent Queen of Angels, Mount Angel; Joseph Van Der Heyden, *The Louvain American College, 1857-1907* (Fr. & R. Ceuterick, Louvain, 1909), 276; Seghers to Stampfl, Portland, July 13, 1881, SLB I, PC.

P. Juvenal STAMPFL

Male, born 1853 in Austria

Source: FHL Film 1255082; National Archives Film T9-1082; Page 156C

1880 United States Census, Sublimity, Marion County, Oregon

Age 27, birthplace of parents Austria

Occupation: Catholic priest